

Outcomes Assessment Updates for Academic Senate

OA Co-Coordinator: Tania Jabour & Rachel Polakoski

Nuventive Specialist: Heyley Troyer

Senior Dean of IESE: Bri Hays

April 10, 2025

Outcomes Assessment Committee

Goals 24-25

1

Identify departments/areas in instruction and student services that are facing challenges with outcomes assessment and provide support to ensure compliance.

2

Facilitate program learning outcomes (PLO) updates and revisions, mapping and/or assessment plans, and assessment completion for instructional areas.

3

Facilitate the transition to Nuventive, including developing new process for assessment data entry, exploring reports and data capacities, and informing stakeholders of the changes.

OAC Current Membership List



Tania Jabour and Rachel Polakoski,
Outcomes Assessment Co-Coordinators



Bri Hays, Senior Dean of IESE



Heyley Troyer, IE Specialist



Stephanie Gutierrez, Recorder

Robert Dutnall, MSE Faculty

Keenan Murray, MSE Faculty

Marvelyn Bucky, AHSS Faculty

Steve Weinert, AHSS Faculty

Michael Aubry, CE Faculty

Laura Ratto, AKHE Faculty

Vacant, Counseling Faculty

Matthew Chase, LTR Representative

Briseida Elenes, SS Administrator

Rebecca Emadian, Classified Staff Representative

Vacant, Student Representative

Outcomes Assessment Projects Spring 2025

SLO Data Reporting: Liaison-Driven Needs
Assessments for Instructional Programs

- **Nuventive Rollout:** Canvas Integration, Data Input Process, Update Workbook
- **Program Review:** Evaluation for Outcomes Assessment
- **PLO Project:** Department Updates to PLOs, Establishing and Maintaining PLO Mapping
- **ILO Updates:** Review ILOs & Edit ILO Survey Questions
- **Student Services Support:** Assessment Methods, Data Reporting through Program Review, Progress Reporting



Changes in Outcomes Assessment Beginning Fall 2025



SLO data reporting will happen in Nuventive



Slowly sunsetting the current SLO Assessment Entry Form (FormFacade)



Nuventive Specialist position within IESE no longer funded by the Foundation



Heyley no longer available to manually input SLO data from form into Nuventive



Canvas & Nuventive Integration

Goals for Fall 2025 and Beyond



Department chairs and/or coordinators trained to input SLO data into Nuventive



Department chairs, coordinators, or designated faculty member oversee SLO data via Nuventive



All faculty (eventually) assess SLOs via Canvas



Outcomes Assessment Co-Coordinator and OAC provide support

Benefits of SLO Assessment via Canvas Outcomes



Automatic reporting & data visualization at multiple levels



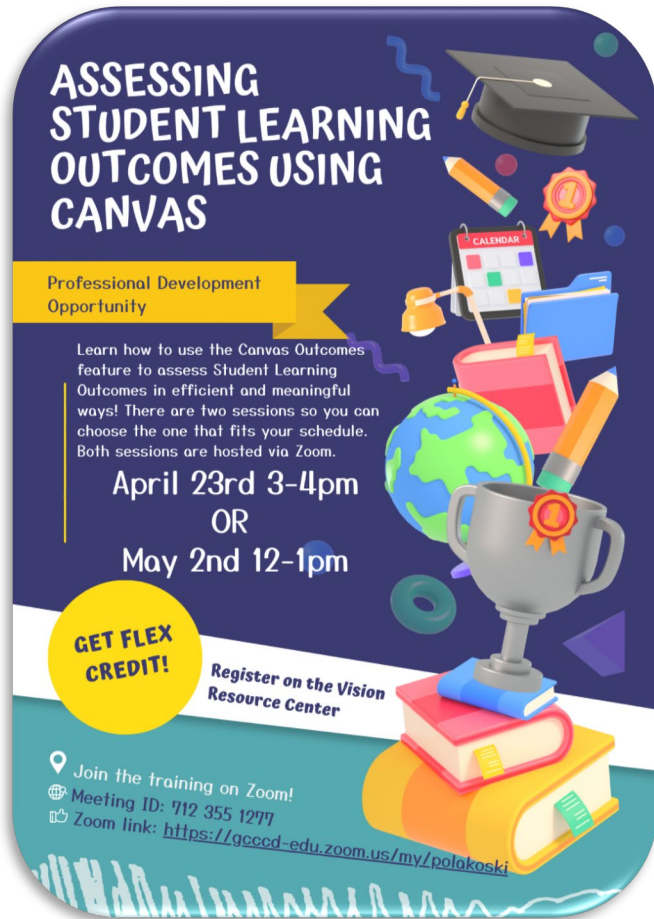
Opportunity for disaggregated outcomes assessment



Set up your course once and then the rest is on auto-pilot



Nuventive dashboards display what is needed for reporting



Professional Development Opportunities

Flyer to share with your faculty!

Guides & Resources



DETAILED
HOW-TO GUIDE



ONE-PAGE
REFERENCE

Using Canvas Outcomes to Assess SLOs Quick Guide

This one-page document summarizes the steps to set up your Canvas course to assess student learning outcomes (SLOs). For more comprehensive instructions and how-to videos, check out the [detailed guide](#).

SET UP YOUR CANVAS COURSE

- ☐ Find and add Outcomes to your course ([video](#)).
- ☐ Enable the Learning Mastery Gradebook ([video](#)).

ASSESS SLOS USING RUBRICS

- ☐ Add outcomes to existing rubrics or create new rubrics from scratch ([video](#)).
- ☐ When adding an outcome to a rubric, it is recommended that you uncheck the box next to "Use this criterion for scoring" to maintain your current rubric point total.
- ☐ Attach the rubric with the SLO to an assessment and use it while grading in speed grader to track individual student progress related to the SLO.

ASSESS SLOS USING QUIZZES

- ☐ If using Classic Quizzes, create a question bank and fill it with questions related to the SLO. Align the SLO to the question bank and set the mastery percentage (70% recommended). Then use the question bank in a quiz ([video](#)).
- ☐ If using New Quizzes, create a quiz and then align an SLO to the entire quiz or an individual question ([video](#)).

Have any questions? Reach out to Rachel.Polakoski@gcccd.edu