

1 FLOOR PLAN LEVEL 1
1/8" = 1'-0"

GENERAL FLOOR PLAN NOTES

- NOTES ON THIS SHEET ARE AN ACCUMULATION OF ITEMS ON THE PLANS, ELEVATIONS, AND SECTION PLANS; NOT ALL ITEMS ARE FOUND ON EACH SHEET.
- DIMENSIONS SHOWN ARE TYPICAL OF THIS SHEET ONLY, UNLESS NOTED OTHERWISE.
- GRID LINES ARE MEASURED FROM EXTERIOR FACE OF STUD, CMU, AND CONCRETE AND FROM THE CENTERLINE, UNLESS NOTED OTHERWISE.
- INTERIOR DIMENSIONS ARE MEASURED TO FACE OF STUD, UNLESS NOTED OTHERWISE. EXTERIOR DIMENSIONS ARE MEASURED TO FACE OF FINISH.
- ENLARGED INTERIOR PLANS, ENLARGED INTERIOR ELEVATIONS, ENLARGED INTERIOR SECTION/DETAILS ARE MEASURED TO FACE/EDGE OF FINISHED SURFACE, UNLESS NOTED OTHERWISE.
- NOT ALL UNDERGROUND AND ABOVE GROUND UTILITIES AND EQUIPMENT ARE SHOWN IN THESE DRAWINGS.
- NOT ALL PROJECT ITEMS ARE SHOWN IN THESE DRAWINGS. ITEMS SHOWN ARE FOR GRAPHIC PURPOSES AND SHALL BE VERIFIED WITH THE APPROPRIATE DISCIPLINES FOR ADDITIONAL DETAILED INFORMATION + REQUIREMENTS. CONTRACTOR TO COORDINATE ALL PROJECT ITEMS.
- REFER TO WALL, FLOOR, AND CEILING TYPES FOR R-VALUES.
- ALL NEW FURNISHINGS PER DISTRICT STANDARDS.
- NO CHAMFERED CORNERS AT ARCHITECTURALLY EXPOSED CONCRETE COLUMNS.
- REFER TO G006 FOR RESTROOM ACCESSIBILITY DETAILS.
- REFER TO G002 FOR PROJECT REQUIREMENTS.
- ALL ROOFING TO BE CLASS 'A' FIRE RATED.
- MINIMUM ROOF SLOPE TO BE 1/4" / 1'-0" FOR DRAINAGE.
- ARCHITECT TO APPROVE FINAL TILE LAYOUT PRIOR TO INSTALLATION.
- ALL STRUCTURAL FRAMING AND MISC. METALS EXPOSED TO VIEW TO RECEIVE CONTINUOUS WELDS GROUND SMOOTH AND PAINT TO MATCH CEILING.
- MITER AND WELD ALL CORNERS, TYP. U.O.N.
- ARCHITECT TO APPROVE FINAL FLOOR AND CEILING TILE LAYOUT PRIOR TO INSTALLATION.

KEYNOTES

- 05.38 STEEL FRAMED STAIR WITH PRECAST CONCRETE TREADS, EXPOSED STEEL PAINTED PT-X
- 07.06 ROOF OVERHANG ABOVE
- 07.15 ADDITIONAL ACOUSTICAL SEPERATION AT THIS LOCATION
- 08.74 POST MOUNTED TOUCH ACTIVATED DOOR OPERATOR ACTUATOR AND CARD READER
- 08.75 POST MOUNTED TOUCH ACTIVATED DOOR OPERATOR ACTUATOR, CARD READER, AND KNOX BOX
- 22.09 FLOOR DRAIN WITH TRAP PRIMER, REF. PLUMBING
- 27.09 DIGITAL DISPLAY KIOSK, O.F.C.I. REFER TO TECHNOLOGY AND ELECTRICAL DRAWINGS FOR POWER AND DATA
- 32.16 BICYCLE LOCKER

GRAPHIC LEGEND

- FULL HEIGHT NON-RATED PARTITION WALL
- FULL HEIGHT 1-HOUR FIRE RATED PARTITION WALL
- CMU SHEAR WALL
- STOREFRONT PARTITION WALL
- LIMIT OF WORK

FLOOR PLAN_LEVEL 1

INSTRUCTIONAL BUILDING F PHASE 1
CUYAMACA COLLEGE
900 Rancho San Diego Parkway, El Cajon, CA 92019

REVISIONS
50% CONSTRUCTION DOCUMENTS 10.13.2023
90% CONSTRUCTION DOCUMENTS 12.22.2023
100% CD & DSA SUBMITTAL 02.02.2024

PROJECT NO. **2046**
R.S. A.P.
FILE NAME
DATE **02/02/24** DRAWN CHECKED
REVISIONS SHEET NO.

A-103
OF SHEETS

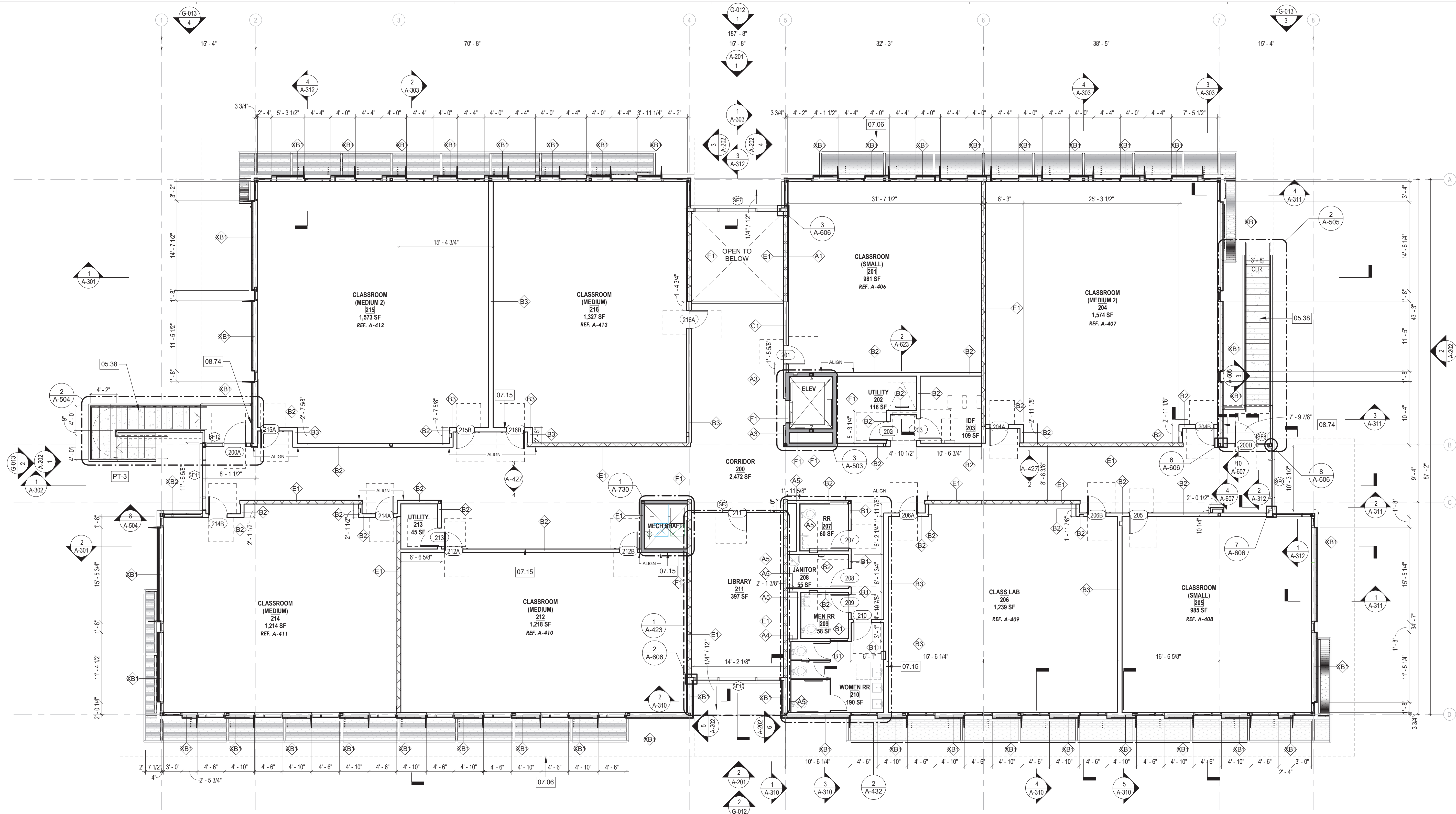
PREPARED FOR THE
GROSSMONT-CUYAMACA COMMUNITY COLLEGE DISTRICT
900 Rancho San Diego Pkwy, El Cajon, CA 92019

PREPARED BY THE
SAFDIE RABINES ARCHITECTS
SAN DIEGO, CA 92103
619.297.6153

GROSSMONT-CUYAMACA COMMUNITY COLLEGE DISTRICT



CONSULTANT
ARCHITECT/CONSULTANT



1 FLOOR PLAN LEVEL 2
1/8" = 1'-0"

- GENERAL FLOOR PLAN NOTES**
- NOTES ON THIS SHEET ARE AN ACCUMULATION OF ITEMS ON THE PLANS, ELEVATIONS, AND SECTION PLANS; NOT ALL ITEMS ARE FOUND ON EACH SHEET.
 - DIMENSIONS SHOWN ARE TYPICAL OF THIS SHEET ONLY, UNLESS NOTED OTHERWISE.
 - GRID LINES ARE MEASURED FROM EXTERIOR FACE OF STUD, CMU, AND CONCRETE AND FROM THE CENTERLINE, UNLESS NOTED OTHERWISE.
 - INTERIOR DIMENSIONS ARE MEASURED TO FACE OF STUD, UNLESS NOTED OTHERWISE. EXTERIOR DIMENSIONS ARE MEASURED TO FACE OF FINISH.
 - ENLARGED INTERIOR PLANS, ENLARGED INTERIOR ELEVATIONS, ENLARGED INTERIOR SECTION/DETAILS ARE MEASURED TO FACE/EDGE OF FINISHED SURFACE, UNLESS NOTED OTHERWISE.
 - NOT ALL UNDERGROUND AND ABOVE GROUND UTILITIES AND EQUIPMENT ARE SHOWN IN THESE DRAWINGS.
 - NOT ALL PROJECT ITEMS ARE SHOWN IN THESE DRAWINGS. ITEMS SHOWN ARE FOR GRAPHIC PURPOSES AND SHALL BE VERIFIED WITH THE APPROPRIATE DISCIPLINES FOR ADDITIONAL DETAILED INFORMATION + REQUIREMENTS. CONTRACTOR TO COORDINATE ALL PROJECT ITEMS.
 - REFER TO WALL, FLOOR, AND CEILING TYPES FOR R-VALUES.
 - ALL NEW FURNISHINGS PER DISTRICT STANDARDS.
 - NO CHAMFERED CORNERS AT ARCHITECTURALLY EXPOSED CONCRETE COLUMNS.
 - REFER TO G006 FOR RESTROOM ACCESSIBILITY DETAILS.
 - REFER TO G002 FOR PROJECT REQUIREMENTS.
 - ALL ROOFING TO BE CLASS 'A' FIRE RATED.
 - MINIMUM ROOF SLOPE TO BE 1/4" / 1'-0" FOR DRAINAGE.
 - ARCHITECT TO APPROVE FINAL TILE LAYOUT PRIOR TO INSTALLATION.
 - ALL STRUCTURAL FRAMING AND MISC. METALS EXPOSED TO VIEW TO RECEIVE CONTINUOUS WELDS GROUND SMOOTH AND PAINT TO MATCH CEILING.
 - MITER AND WELD ALL CORNERS, TYP. U.O.N.
 - ARCHITECT TO APPROVE FINAL FLOOR AND CEILING TILE LAYOUT PRIOR TO INSTALLATION.

- KEYNOTES**
- 05.38 STEEL FRAMED STAIR WITH PRECAST CONCRETE TREADS, EXPOSED STEEL PAINTED PT-X
 - 07.06 ROOF OVERHANG ABOVE
 - 07.15 ADDITIONAL ACOUSTICAL SEPERATION AT THIS LOCATION
 - 08.74 POST MOUNTED TOUCH ACTIVATED DOOR OPERATOR ACTUATOR AND CARD READER

GRAPHIC LEGEND

	FULL HEIGHT NON-RATED PARTITION WALL
	FULL HEIGHT 1-HOUR FIRE RATED PARTITION WALL
	CMU SHEAR WALL
	STOREFRONT PARTITION WALL
	LIMIT OF WORK

CONSULTANT

ARCHITECT/CONSULTANT

GROSSMONT-CUYAMACA COMMUNITY COLLEGE DISTRICT

PREPARED FOR THE
GROSSMONT-CUYAMACA COMMUNITY COLLEGE DISTRICT
900 Rancho San Diego Parkway, El Cajon, CA 92019

PREPARED BY THE
SAFIE RABINES ARCHITECTS
SAN DIEGO, CA 92103
619.297.6153

FLOOR PLAN_LEVEL 2

INSTRUCTIONAL BUILDING F PHASE 1
CUYAMACA COLLEGE
900 Rancho San Diego Parkway, El Cajon, CA 92019

REVISIONS

10.13.2023	50% CONSTRUCTION DOCUMENTS
12.22.2023	90% CONSTRUCTION DOCUMENTS
02.02.2024	100% CD & DSA SUBMITTAL

PROJECT NO. **2046**
R.S. A.P.
FILE NAME
DATE **02/02/24** DRAWN CHECKED
REVISIONS SHEET NO.

A-104
OF SHEETS