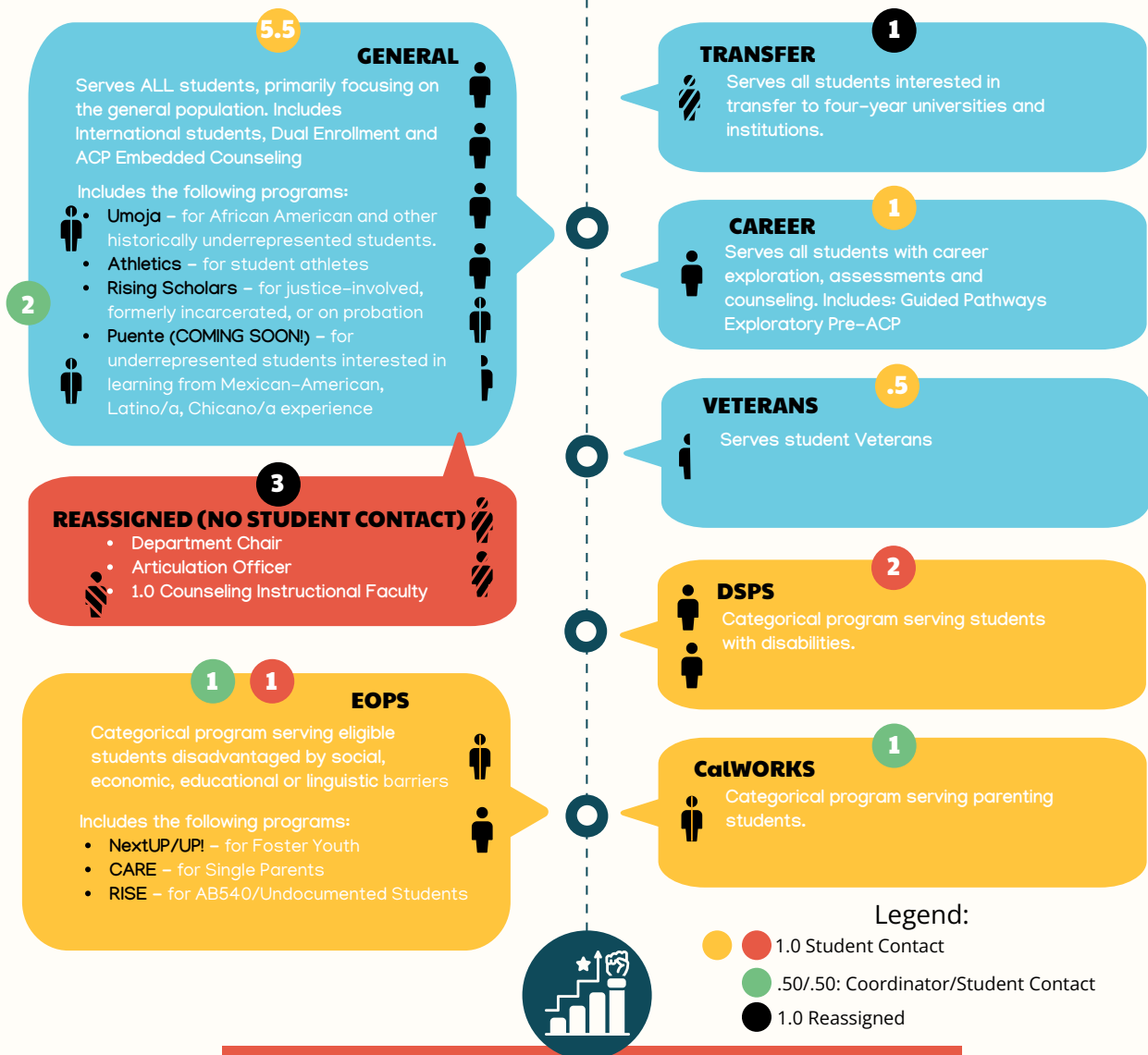


Who and where we are....

370

# Cuyamaca Counseling (Division/Community)

The Cuyamaca Counseling Division is comprised of many different programs and areas of service. We provide both dedicated services to special populations and support programs while maintaining access to counseling to all students through General Counseling.



## CURRENT IMPACTS ON COUNSELING

- **AB928**
  - New Transfer GE Pattern: CALGETC
  - New Requirement: ADT Placement – all transfer students on ADT must have CEP by counselor by 15 units
- **Financial Aid/Colleague**
  - New Process: All change of majors must go through counseling
  - New Requirement: All SAP appeals require CEP
- **Guided Pathways** – unable to adequately support all 8 Academic & Career Pathways and 2 Pre-ACPs with embedded counseling (College Strategic Goal: Increase Persistence)

The recommended student to counselor ratio is 1:370, cited in the Academic Senate adopted paper Consultation Council Task Force on Counseling (2003).  
[https://www.asccc.org/sites/default/files/publications/ConsultationCouncil\\_0.pdf](https://www.asccc.org/sites/default/files/publications/ConsultationCouncil_0.pdf)  
(page 16)